

GARDNER

INSECT LIGHT TRAPS



COMPLETE PRODUCT CATALOG

WWW.GARDNERFLYLIGHTS.COM

TABLE OF Contents



- Available in LED and Fluorescent



- Water Resistant

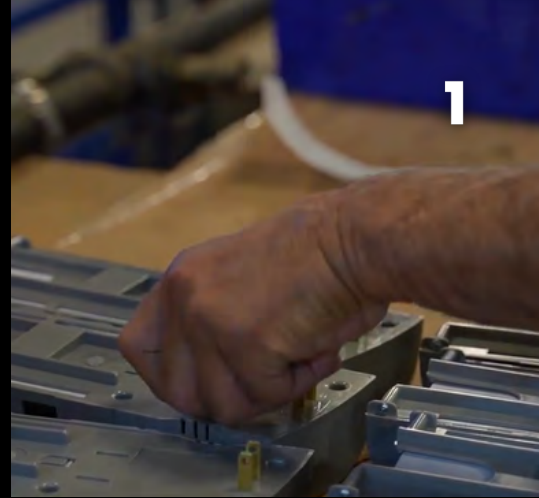
About Us	1
Portable Traps	2
Adhesive Front of House	4
LED Bulbs	8
Stainless Steel & Water Resistant	9
Unique Features	10
Adhesive Back of House	11
Electric Grid (Indoor)	16
Electric Grid (Outdoor)	18
Fruit Fly Control	19
Additional Fly Control	22
Replacement Lamps	23
Replacement Glueboards	25



About Us

Welcome to Gardner, your trusted source for cutting-edge insect light traps since 1928. Nestled in the heart of Horicon, WI, just 1.5 hours north of the bustling city of Chicago, IL. We pride ourselves on being the go-to manufacturer for effective insect control solutions. Our commitment to quality and excellence has propelled us to offer a diverse range of over 60 models, ensuring that we have the perfect solution for any application. At Gardner, we believe in supporting local communities and maintaining the highest standards of craftsmanship. That's why all our insect light traps are proudly made in the USA.

Quality doesn't have to come with a hefty price tag. Gardner stands out as your affordable solution for insect light traps, offering value-priced products without compromising on effectiveness or durability. We believe in making pest control accessible to all without sacrificing quality.



PORTABLE TRAPS



UCT-15

Dimensions: 12" W x 3.5" H x 3"D
Lamps: 12" x 15 Watt Part# EL-16S
Glueboard: 3" X 11" Part# EL-55
Attraction Range: 900 Sq. Ft.
Available in Black, White, and
Green



[> LEARN MORE](#)



FLYWEB CLASSIC

Dimensions: 3.5" W x 10.5" H x 1.75"D
Lamps: 6" x 9 Watt Part# EL-22
Glueboard: 3" X 5" Part # CS-64, CS-65
Attraction Range: 600 Sq. Ft.
Available in Grey



[> LEARN MORE](#)

ATMX-30

Dimensions: 13" W x 11" H x 10"D
Lamps: 12" x 15 Watt Part# EL-16S
Glueboard: 7.5" X 11" Part# EL-54
Attraction Range: 2,000 Sq. Ft.
Available in White



[> LEARN MORE](#)

MX-360

Dimensions: 3.5" W x 10.5" H x 1.75"D
Lamps: 18" x 25 Watt Part# EL-08S
Glueboard: 9" x 16", Part EL-61, 62
Attraction Range: 3,000 Sq. Ft.
Available in White



[> LEARN MORE](#)



Sit back and let the FlyWeb work for **you.**



Traps all kinds of flying insects

The FlyWeb Classic is designed for indoor use wherever there are flying pests. The compact size makes it perfect to hide while ridding your space of flying pests. All you need is an electrical outlet – **just plug it in!**

Replacement glueboards and bulbs are available



FW-9

MULTIPLE USES



RESTURANTS



KITCHENS



BATHROOMS



OFFICES



OPEN SPACES



BREAKROOMS



ADHESIVE TRAPS

FRONT OF HOUSE



IFLY ACCENT



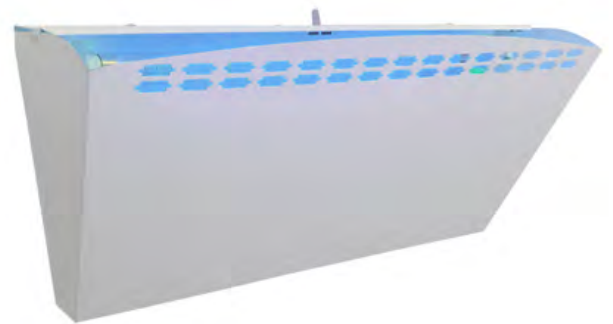
Dimensions: 24" W x 9" H x 4"D
 Lamps: 2" x 15 Watt Part# EL-06, EL-06S
 Glueboard: 5" X 17" Part# EL-57
 Attraction Range: 1,200 Sq. Ft.
 Available in Stainless Steel,
 Black, White



WS-225



Dimensions: 20.25" W x 10" H x 6.75"D
 Lamps: 18" x 25 Watt Part# EL-08, EL-08S
 Glueboard: 9" X 16" Part# EL-61, EL-62
 Attraction Range: 1,800 Sq. Ft.
 Available in White



WS-85

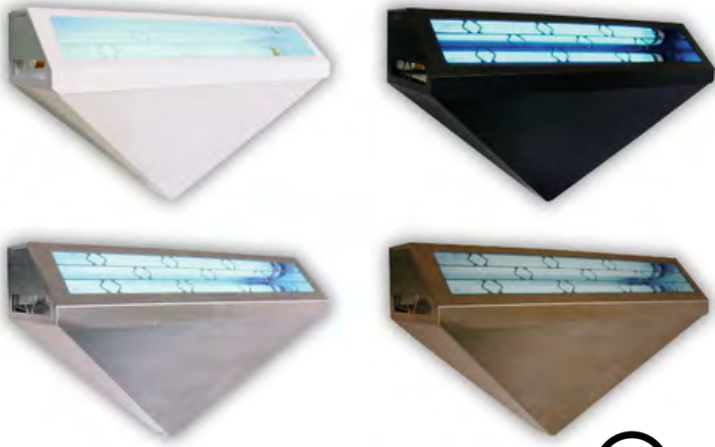


Dimensions: 24" W x 10" H x 5"D
 Lamp: 18" x 15 Watt Part# EL-06, EL-06S
 Glueboard: 4" X 17" Part# EL-60, EL-60B
 Attraction Range: 900 Sq. Ft.
 Available in Black, White, and
 Gold Vein



ADHESIVE TRAPS

FRONT OF HOUSE



WS-95



Dimensions: 19" W x 11.5" H x 5.5"D

Lamp: 18" x 25 Watt Part# EL-08, EL-08S

Glueboard: 5" X 17" Part# EL-57

Attraction Range: 1,800 Sq. Ft.

Available in Black, White, Gold Vein, and Stainless Steel



PHOENIX WS-225



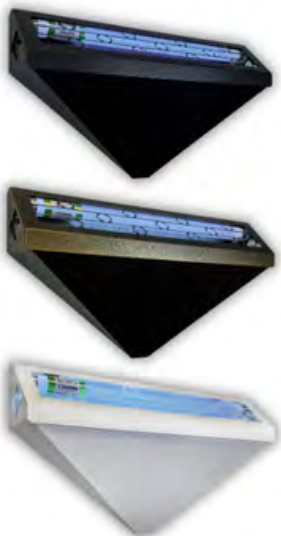
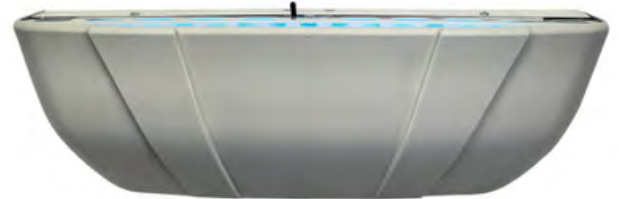
Dimensions: 20.25" W x 10" H x 6.75"D

Lamps: 18" x 25 Watt Part# EL-08, EL-08S

Glueboard: 9" X 16" Part# EL-61, EL-62

Attraction Range: 1,800 Sq. Ft.

Available in White



WS-90



Dimensions: 24" W x 10" H x 5"D

Lamps: 18" x 15 Watt Part# EL-06, EL-06S

Glueboard: 3" x 19" Part# EL-63

Attraction Range: 1,200 Sq. Ft.

Available in Black, White, and Gold Vein

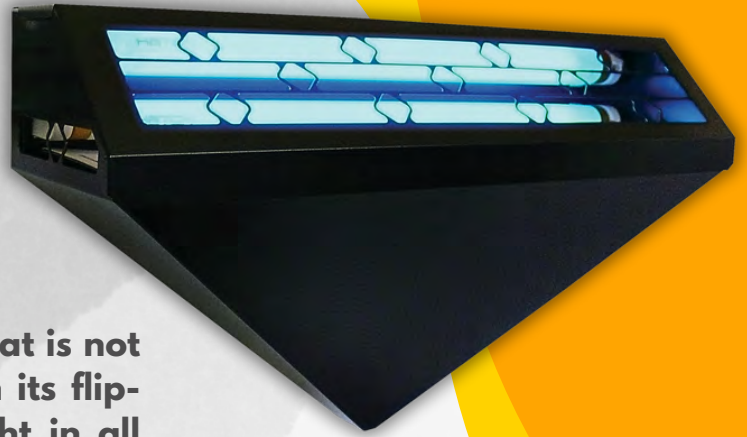




Powerful, Decorative, Easy to Use.

WS-95

The WS-95 is a Sleek Wall Sconce Light that is not only stylish, but also easy to service with its flip-open lid. The sconce emits ultraviolet light in all directions, attracting flying insects and capturing them on a replaceable adhesive board inside the sconce. For optimal results, it is best to position the light 5-6 feet above the floor.

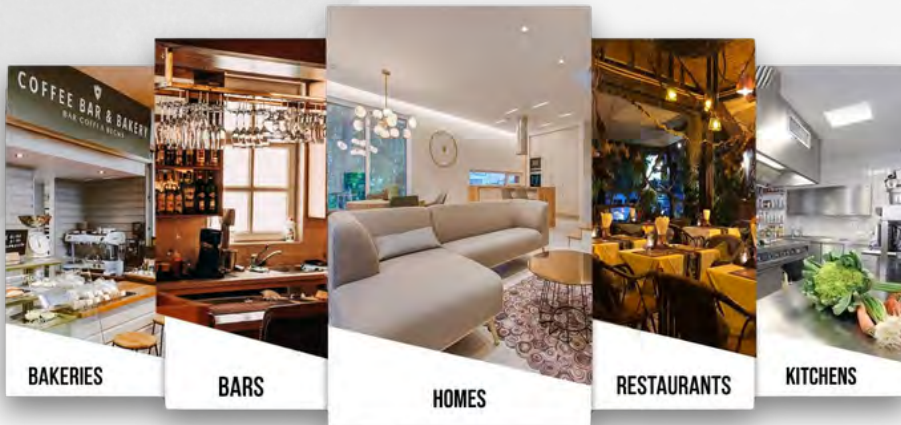
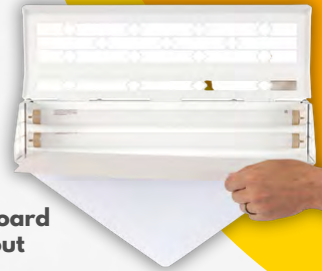


Available in Black, White, Gold Vein, and Stainless Steel



2 YEAR WARRANTY

Easy glueboard change out



POWERFUL



UNIQUE DESIGN



EASY TO USE



NON CHEMICAL TRAPPING



MADE IN USA



ENERGY EFFICIENT

Best Value and Easy to Install.

WS-85

The WS-85 is a V-shaped wall sconce with an adhesive board that is simple to replace. For best results, mount the sconce 5-6 feet above the floor.



Easy glueboard change out

7

 <p>15-WATT LAMP</p>	 <p>POWER CORD STORAGE AREA</p>
 <p>UL LISTED</p>	 <p>057296-WI-001</p>

Available in Black, White, and Gold Vein



- ✓ Hassle-free
- ✓ User-Friendly
- ✓ Convenient



OFFICE



BARS



HOTEL



NON TOXIC



UNIQUE DESIGN



ENERGY EFFICIENT

IDEAL FOR USE IN BIG COMMERCIAL PLACES



The Illuminating Revolution in Energy-Saving Bulbs



LED Insect Bulb

- 7 Watt LED UV Output = 15 Watt Fluorescent
- Multi-nanometer wavelength technology
- Emit same wavelengths as Fluorescent bulb
- Retrofits in many existing ILTs
- Same 2-pin fluorescent bulb design
- Available in: 18", 24", & 48"
- Gardner LED Bulbs are encased in glass with FEP Shatterproof Diffusion Coating

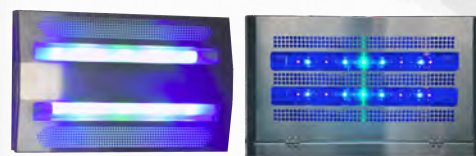
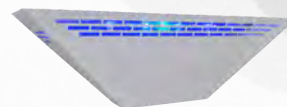


Our Story

Gardner Manufacturing Co., Inc. innovated and patented a retrofittable LED lamp designed for attraction of flying insects. This groundbreaking development emerged from testing and observations of the standard 15W fluorescent lamp. They discovered that UV fluorescent lamps emitted many different ultraviolet wavelengths. Securing a utility patent in 2021, the LED lamp features an internal integrated circuit that can be seamlessly integrating into various insect light traps utilizing a magnetic ballast. The Gardner LED lamps are protected by an FEP safety coating that allows maximum UV emission.



The LED bulbs fit in many popular ILTs



REDUCES ENERGY USAGE BY 54%



3 YEAR LIFESPAN



HIGHLY EFFECTIVE

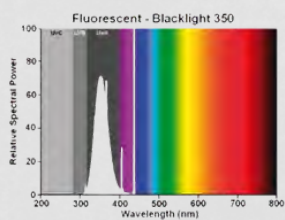


RETROFITTABLE - NO NEED TO PURCHASE NEW ILT; JUST REPLACE STARTER AND BULB

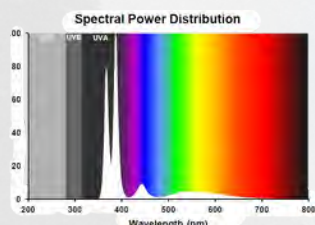
***for models with magnetic ballasts*



Ladies and Gentlemen this is a GOD send. I have never had so many flying insects on glue boards ever. I am a Pest Controller at a VA facility and switched over to the Gardner LED fly lights a year ago and have been nothing short of amazed by the change from florescent bulbs. I will most certainly continue with this product for a great many years. Gardner put in to make my program a success. - Customer



Gardner 15W Fluorescent Lamp



Gardner 7W LED Lamp

ADHESIVE TRAPS

STAINLESS STEEL & WATER RESISTANT



ANACONDA



Dimensions: 7.5" W x 25" H x 7.5"D
Lamps: 24"x 20 Watt Part# EL-07T8S
Glueboard: 5" X 22" Part# EL-58P
Attraction Range: 1,800 Sq. Ft.
Available Stainless Steel



[> LEARN MORE](#)

IFLY 40



Dimensions: 11" W x 28" H x 5"D
Lamps: 2"x 20 Watt Part# EL-07T820S
Glueboard: 12" X 21.75" Part# EL-79
Attraction Range: 1,800 Sq. Ft.
Available in Stainless Steel

[> LEARN MORE](#)



IFLY 65



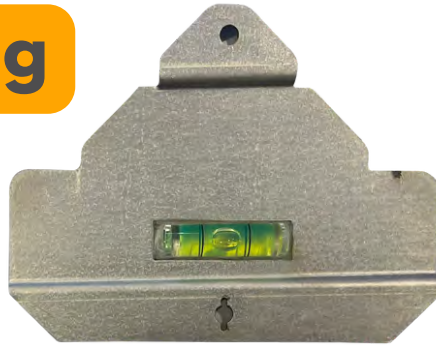
Dimensions: 11" W x 53" H x 5"D
Lamps: 2"x 40 Watt Part# EL-09T840S
Glueboard: 2X 12" X 21.75" Part# EL-79
Attraction Range: 2,500 Sq. Ft.
Available in Stainless Steel



[> LEARN MORE](#)

Easy to Use, Easy to Service.

Self Leveling Mounting Bracket



- Available on nearly every Gardner fly light
- Leveled bracket makes sure the trap is always level
- Fly light installation is easier, faster and more professional

Glueboard Roller Guide System



Patent# 8.341.874

- Quick and Efficient glueboard installation
- Glueboards will not stick to lamps
- NO MORE MESS!



ADHESIVE TRAPS

BACK OF HOUSE



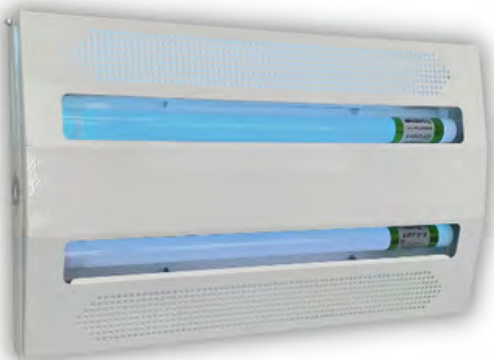
IFLY ION

Dimensions: 2.63" W x 11.5" H x 2.75"D
 Lamps: 2" x 36 Watt Part# EL-12S
 Glueboard: 11" X 17.75" Part# EL-77, EL-78
 Attraction Range: 2,000 Sq. Ft.
 Grilled version also available
 Available in Powder Coated Steel



IFLY ION1

Dimensions: 2.63" W x 5.05" H x 2.75"D
 Lamps: 1 x 36 Watt Part# EL-12S
 Glueboard: 9" X 16.75" Part# EL-12907
 Attraction Range: 1,200 Sq. Ft.
 Available in Powder Coated Steel



IFLY CLASSIC

Dimensions: 19" W x 11" H x 2.50"D
 Lamps: 2" x 15 Watt Part# EL-06S
 Glueboard: 9" X 16.50" Part# EL-12907
 Attraction Range: 1,200 Sq. Ft. A
 Available in White and Stainless Steel





GARDNER

-Universal- ^{ILT} 907 STYLE GLUEBOARD

Increase profitability by using the universal glueboard for all of your insect light traps!



**Perforation to tear
in half to fit in smaller
ILTs**



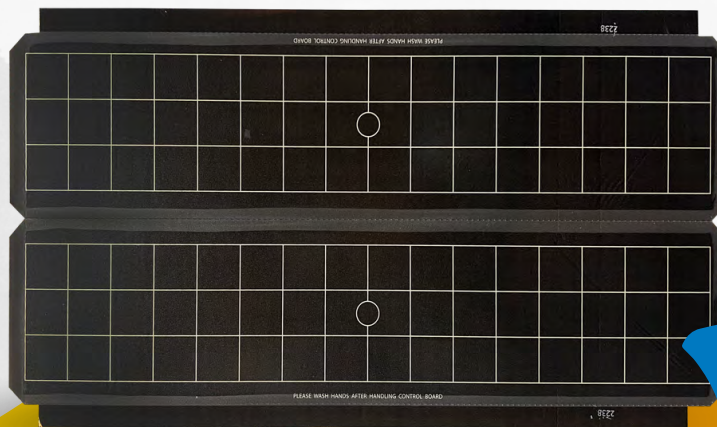
**Easy to remove
glue release liner**



Better Priced

Fits in many popular ILTs

- WS-85
- Mantis 1x2
- Vector Plasma
- Catchmaster 911
- Flying Venus
- Genus Spectra
- Genus FLI
- iFly Classic



**Sold in packs of 12 glueboards
Gardner Part # EL-12907**

**Gridded for
easy counting**

ADHESIVE TRAPS

BACK OF HOUSE



GT-180

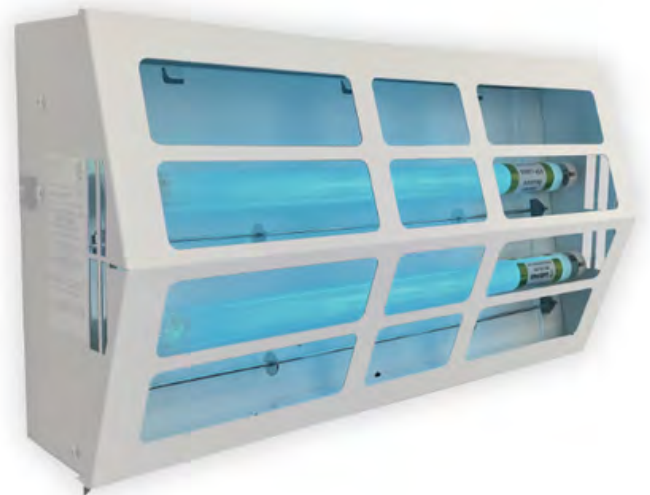
Dimensions: 19.5" W x 11.5" H x 3.5"D
 Lamps: 30 Watt Part# EL-06,EL-06S
 Glueboard: 9" X 16" & 3" X 19"
 Part# EL-61/62, EL-63
 Attraction Range: 1,200 Sq. Ft.
 Available In White



[> LEARN MORE](#)

GT-200

Dimensions: 19.5" W x 11.5" H x 3.5"D
 Lamps: 30 Watt Part# EL-06,EL-06S
 Glueboard: 9"x16 & 4"x17"
 Part# EL-61/62, EL-60/60B
 Attraction Range: 2,000 Sq. Ft.
 Available in White



[> LEARN MORE](#)

ADHESIVE TRAPS

BACK OF HOUSE



GT-220



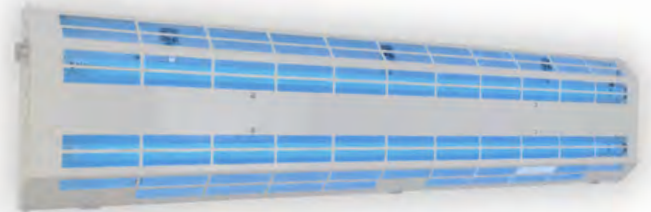
Dimensions: 24.75" W x 9" H x 3.75"D
 Lamps: 24" x 20 Watt Part# EL-07T820S
 Glueboard: 5" X 22" Part# EL-58
 Attraction Range: 2,500 Sq. Ft.
 Available in Stainless Steel



GT-480



Dimensions: 48.75" W x 11.5" H x 3"D
 Lamps: 2 x 40 Watt Part#EL-09T840S
 Glueboard: 9" X 16." Part# EL-61, EL-62
 Attraction Range: 3,500 Sq. Ft.
 Available in White



GT-215



Dimensions: 18.5" W x 12" H x 2.3"D
 Lamps: 2" x 15 Watt Part# EL-06,EL-06S
 Glueboard: 9" X 16" Part# EL-66 & EL-67
 Attraction Range: 1,200 Sq. Ft.
 Available in aluminum and white



iFly SERIES FROM GARDNER

Premium Line of Insect Light Traps



ION & ION 1



CLASSIC

- 30 or 72 Watt Industrial Adhesive
- Self-Leveling Mounting Bracket

INDUSTRIAL BACK OF HOUSE INSECT LIGHT TRAPS

IFLY 65



DECORATIVE FRONT OF HOUSE INSECT LIGHT TRAP

ACCENT



Available in Black, White, and Stainless Steel

INDUSTRIAL GRADE INSECT LIGHT TRAPS

IFLY 40



- The **ONLY** Stainless Water and Dust Resistant Insect Light Traps
- Durable and Easy to Use
- Flat Wall or Corner Mount

- 30 Watt Decorative Light Trap
- Self-Leveling Mounting Bracket
- Glueboard Hidden from View

2 YEAR WARRANTY



ELECTRIC GRID

INDOOR USE



AG-961



Dimensions: 26" W x 14" H x 5.5"D
Lamps: 18"x 25 Watt Part# EL-08, EL-08S
Attraction Range: 2,000 Sq. Ft.
Available in Aluminum



AG-963



Dimensions: 15" W x 26" H x 5"D
Lamps: 18"x 25" Watt Part# EL-08 & EL-08S
Attraction Range: 2,000 Sq. Ft.
Available in Fluorescent & LED
Available in White



AG-969



Dimensions: 19" W x 30" H x 5.75"D
Lamps: 18"x 25" Watt Part# EL-08 & EL-08S
Attraction Range: 3,000 Sq. Ft.
Available in Stainless Steel



ELECTRIC GRID

INDOOR USE



AG-970



Dimensions: 14" W x 57" H x 5.5"D

Lamps: 48" x 40 Watt Part# EL-09, EL-09S

Attraction Range: 3,500 Sq. Ft.

Available in Stainless Steel



RG-1002



Dimensions: 14" W x 57" H x 5.5"D

Dimensions: 11" w x 28" h x 5" d (TJ)

Lamps: 48" 40 Watt Part# EL-09, EL-09S

Lamps: EL-07T8S (TJ)

Attraction Range: 2,000-3,500 Sq. Ft.

Available in White and Aluminized Steel



AG-241



Dimensions: 55" W x 16.5" H x 5"D

Lamps: 48" x 40 Watt Part# EL-09, EL-09S

Attraction Range: 3,500 Sq. Ft.

Available in Fluorescent & LED

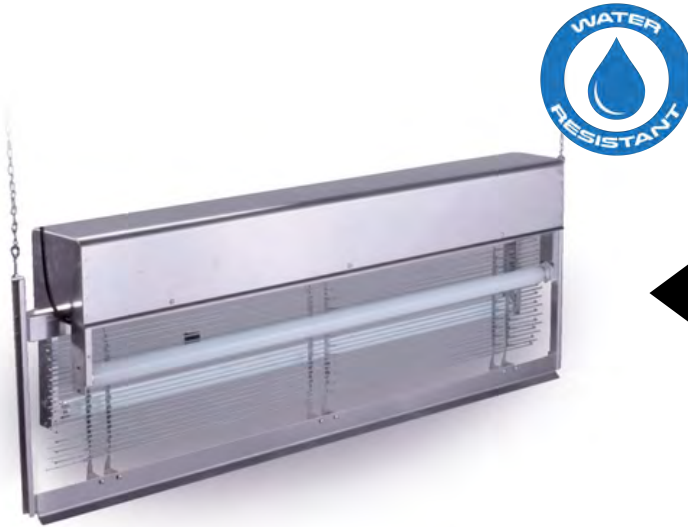
Available in Aluminum or Stainless Steel



ELECTRIC GRID

OUTDOOR USE

18



AG-661



Dimensions: 56" W x 20.5" H x 6.75"D
Lamps: 40 Watt Part# EL-09, EL-09S
Attraction Range: 4,500 Sq. Ft.
Available in Fluorescent & LED
Available in Aluminum



KM-220



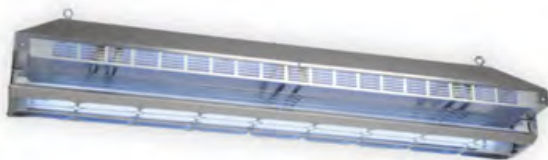
Dimensions: 12" W x 253" H x 8"D
Lamps: 20 Watt Part# EL-07T820S
Attraction Range: 2,500 Sq. Ft.
Available in Fluorescent & LED
Available in Aluminum



KM-240



Dimensions: 48.75" W x 12.25" H x 7.875"D
Lamps: 48" X 40 Watt Part# EL-09T840S
Attraction Range: 3,500 Sq. Ft.
Available in Fluorescent & LED



FRUIT FLY CONTROL



TRAPPLE

Use this realistic apple to catch fruit flies. Simply place the apple into your or near your fruit bowl. The formulated fruit fly attractant will work its magic and lure and trap them.

6 pack Part # TR-02-06BX

12 pack Part # TR-02-12



MINI-TRAPPLE

The Mini Trapple functions similarly to its larger counterpart, the Trapple, enticing fruit flies using the same attractant just in a more compact form.

Dimensions: 2.25" W x 1.75" H

Days: 30-40

12 pack Part # TR-02-12M



FLYWEB FRUIT FLY TRAP

This is a discreet solution for fruit fly control that can be mounted under counters, bars, and cabinets. Follow the instructions on each box on how to use it effectively by placing it near areas where fruit fly problems are common.

Part # FW-15



FRUIT FLY CONTROL



FLYWEB FRUIT FLY SPRAY-READY TO USE

An all-natural solution for eliminating fruit flies by spraying in common areas and potential hiding spots. Safe for use in food environments and equipment.

Actives: Clove Oil & Cottonseed Oil

Part # FW-590T-RTU



FLYWEB FRUIT FLY SPRAY AEROSOL

An all-natural aerosol solution is provided to safely eliminate fruit flies in food environments. Simply spray common areas and potential hiding spots to eliminate fruit flies with ease.

Actives: Clove Oil & Cottonseed Oil

Part # FW-590T-A



FLYWEB FRUIT FLY SPRAY CONCENTRATE

The Flyweb Fruit Fly Spray Concentrate is a cost saving solution for that gives you all the benefits of the highly effective 25b exempt product but can be mixed in your own foamer or sprayer.

Holds a 25b FIFRA exemption.

Part # FW-590T



FRUIT FLY CONTROL



FLYWEB FRUIT FLY SPRAY CONCENTRATE - 5 GALLON

For larger or continuous fruit fly problems, purchase the a 5 gallon drum of the Flyweb Fruit Fly Spray Concentrate.

Part # FW-590T-5



HANDIFOAMER

50 Oz. Foamer that can be used with Flyweb Fruit Fly Spray or any other foaming products. Ideal for small foaming jobs.

Part # HF-50



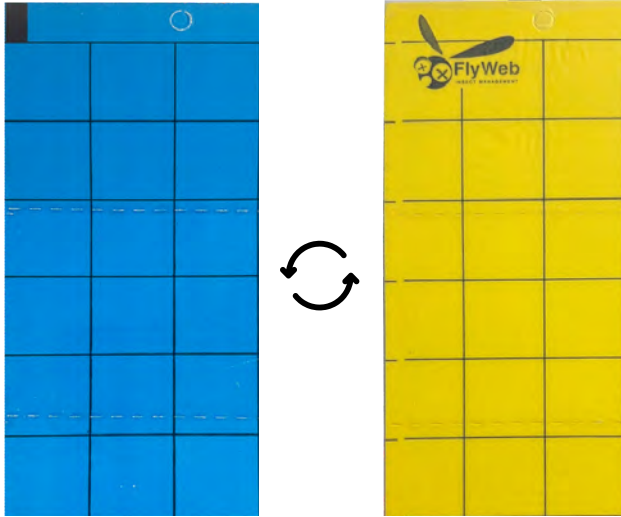
PC FOAMER PLUS

Best industrial foamer on the market at a great price. Mixes up to 1.3 gallons of solution for larger foaming jobs.

Part # PF-128



ADDITIONAL FLY CONTROL



UNIVERSAL INSECT MONITORING CARDS

Dimensions: 3" W x 6" H

Lamps: 2" x 15 Watt

Part # FW-74 (Yellow/Blue)

FW-75 (Yellow/Yellow)

[> LEARN MORE](#)



REPLACEMENT LAMPS

15 Watt 18" Replacement Bulb

Fits In: WS-85, GT-180, Ifly Classic, GT-215, WS-90, iFly Accent

Each	1 pack	2 pack	Case of 25	Style
EL-06	EL-061	EL-062	CS-06	Regular
EL-06S	EL-061S	EL-062S	CS-06S	Shatterproof

20 Watt 24" Replacement Bulb

Fits In: GT-220 & Competitor Models

Each	1 pack	2 pack	Case of 25	Style
EL-07	EL-071	EL-072	CS-07	Regular
EL-07S	EL-071S	EL-072S	CS-07S	Shatterproof
EL-07T8	EL-071T8	EL-072T8	CS-07T8	Regular - T8 Size
EL-07T8S	EL-071T8S	EL-072T8S	CS-07T8S	Shatterproof - T8 Size

25 Watt 18" Replacement Bulb

Fits In: WS-95, GT-200, iFly40, WS-225, MX-360, AG-961, AG-963, AG-969

Each	1 pack	2 pack	Case of 25	Style
EL-08	EL-081	EL-082	CS-08	Regular
EL-08S	EL-081S	EL-082S	CS-08S	Shatterproof

40 Watt 48" Replacement Bulb

Fits In: RG-1002, iFly65, AG-970, AG-241, AG-661, KM-240, GT-480

Each	1 pack	2 pack	Case of 25	Style
EL-09	EL-091	EL-092	CS-09	Regular
EL-09S	EL-091S	EL-092S	CS-09S	Shatterproof
EL-09T8	EL-091T8	EL-092T8	CS-09T8	Regular - T8 Size
EL-09T8S	EL-091T8S	EL-092T8S	CS-09T8S	Shatterproof - T8 Size

30 Watt 36" Replacement Bulb

Competitor Models

Each	Case of 25	Style
EL-10	CS-10	Regular - T8 Size
EL-10S	CS-10S	Shatterproof - T8 Size

REPLACEMENT LAMPS

Questions: call 888-558-1990

30 Watt 36" Replacement Bulb

Competitor Models

Each	Case of 25	Style
EL-10-36	CS-10-36	Shatterproof - T8 Size

22 Watt Circline Replacement Bulb

Fits In: Competitor Models

Each	Case of 12	Style
EL-13	CS-13	Regular
EL-13S	CS-13S	Shatterproof

36 Watt 16" CFL Replacement Bulb

Fits In: ION, IONI & Competitor Models

Each	2 pack	Case of 10	Style
EL-12	EL-122	CS-12	Regular
EL-12S	EL-122S	CS-12S	Shatterproof

26 Watt 12" 2 pin Replacement Bulb

Fits In: Competitor Models

Each	Case of 20	Style
EL-14	CS-14	Regular

40 Watt 24" Replacement Bulb

Fits In: Competitor Models

Each	Case of 25	Style
EL-15	CS-15	Regular
EL-15S	CS-15S	Shatterproof

15 Watt 12" Replacement Bulb

Fits In: UCT-15 & Competitor Models


Each	Case of 25	Style
EL-16	CS-16	Regular
EL-16S	CS-16S	Shatterproof

Use the Cross reference wheel to find the right bulb



Contact Us

GET IN TOUCH WITH US!

 [\(888\) 558-1990](tel:(888)558-1990)

 jasonp@gardnermfg.com

 www.gardnerflylights.com

Gardner is proud to provide a **Two Year Limited Warranty** on all products.
Contact us with any questions.

 100 Industrial Dr
Horicon, WI 53032

